

DUSCHOLUX CareTec® Pro

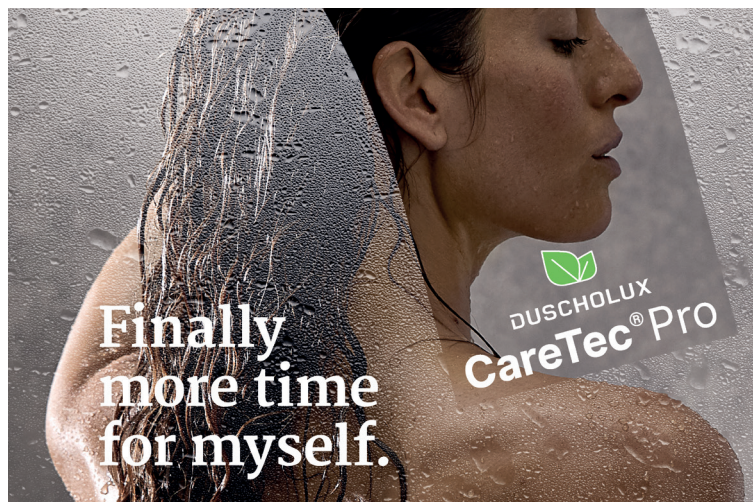
Valid from 1st January 2021.

Congratulations – you have selected the right product!

Thanks to the CareTec® Pro coating, your shower will remain clear for longer and will be easier to clean.

The CareTec® Pro coating, specially developed for use in the shower, forms an easy-clean and dirt-repellent surface. Tests have verified a service life of over ten years for CareTec® Pro¹. DUSCHOLUX provides a 5 year guarantee for the easy-clean effect² of CareTec® Pro as well as guaranteed protection from glass corrosion for 10 years. The guarantee is valid ex-works subject to compliance with the product information and the care instructions contained therein from DUSCHOLUX.

The shower must be cleaned at regular intervals in order to maintain this function as well as possible throughout the service life of your shower. Ideally rinse off the glass after use with cold water. If you would like to wipe away the water droplets using a squeegee, please use the DUSCHOLUX squeegee with the special lip. The shower should generally be cleaned with a microfibre cloth once every 1 or 2 weeks. DUSCHOClean or a comparable cleaning agent can be used; however they are not necessary for cleaning the glass.



¹ The minimum contact angle at the start of the testing was set as >90° per TÜV Rheinland. After 10,000 wiping movements (=10 years of use), the angle must be at least 50% of the starting angle.

² Easy-cleaning is defined with a static contact angle of at least >70 degrees per industry standard.

Guarantee restrictions

The use of abrasive or alkaline cleaning agents, vinegar-based cleaning agents or squeegees that have not been checked by DUSCHOLUX for use with the CareTec® Pro coating, can damage the coating. In order to maintain the function, the shower system must be cleaned regularly. If it is not possible to remove limescale deposits when cleaning, Duscholux must be informed in writing within 10 days via garantie@duscholux.com quoting the guarantee number – the coating could be damaged at such points. In the event of this procedure being disregarded, all warranty claims will have to be rejected.

If it is determined that CareTec® Pro no longer fulfils its function at any point during the guarantee period, please report this to us at garantie@duscholux.com, quoting the guarantee number and providing a photo of the shower. DUSCHOLUX reserves the right to check compliance with the aforementioned conditions on site. In the event of a guarantee claim, DUSCHOLUX will provide a kit to renew the coating, free of charge.